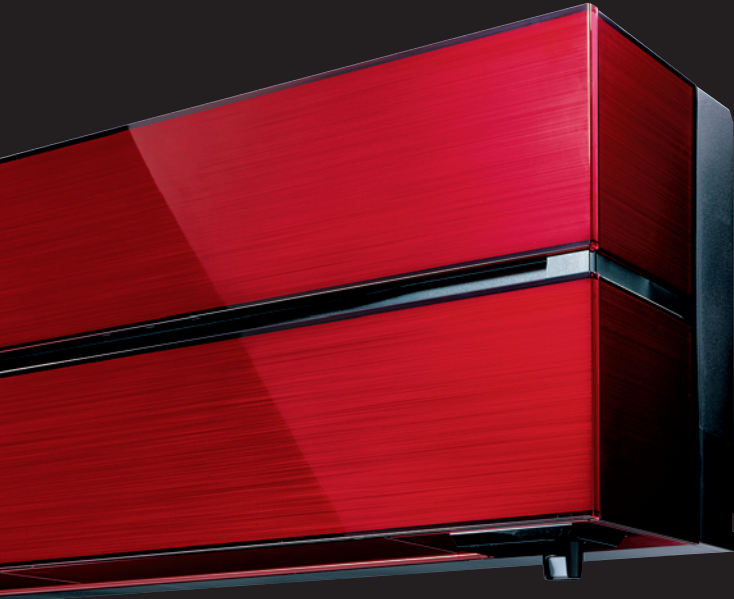


Air Conditioning

MSZ-LN Series

PRODUCT FLYER







When technology meets *sophistication*

The MSZ-LN Series is a wall mounted system that blends energy efficiency with a sophisticated streamlined design.

The new sleek ultra modern design is available in Ruby Red, Onyx Black and Pearl White to suit the most discerning interior designs.

Packed with a wide range of features including built-in Wi-Fi, Plasma Quad Plus Filtration System and 3D i-See sensor utilising R32 refrigerant.

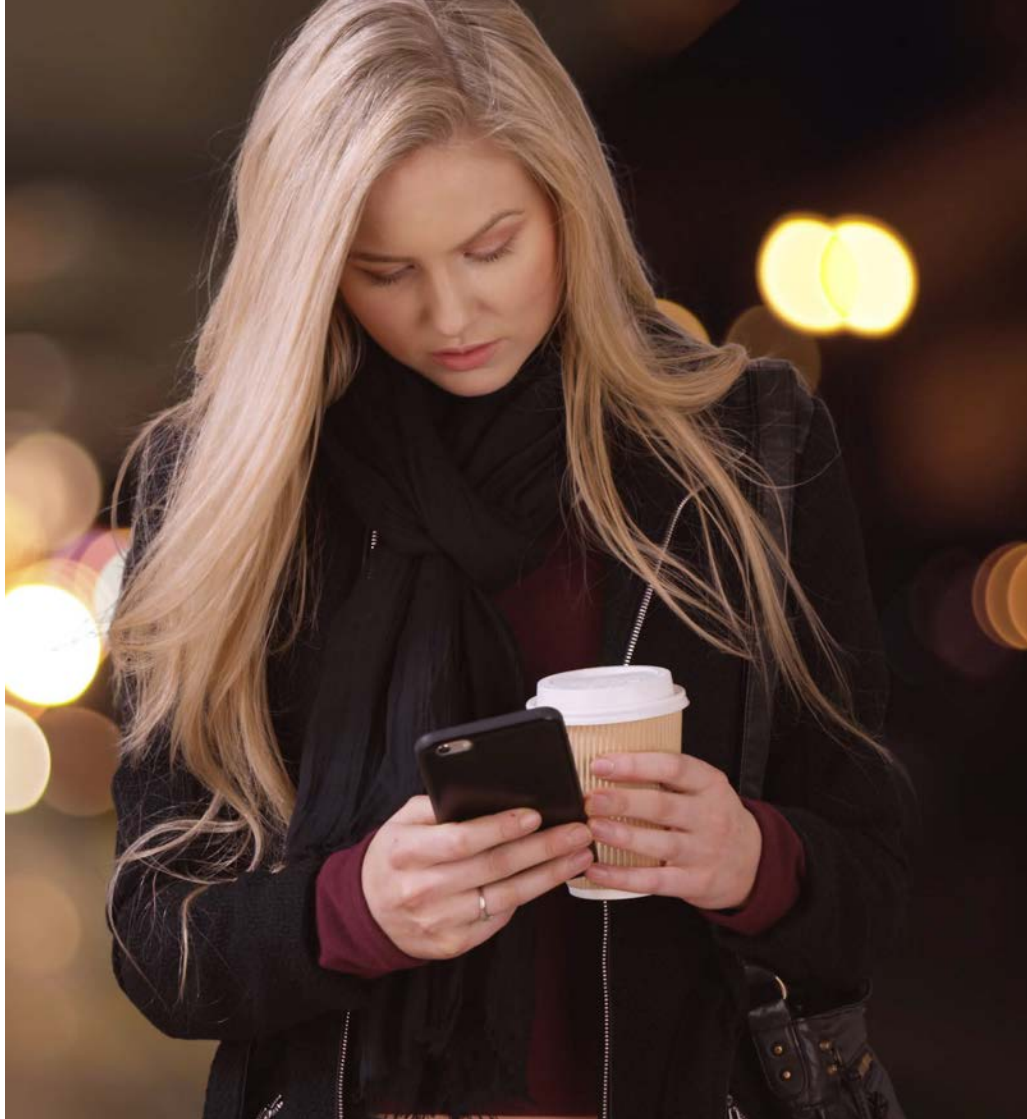
BUILT IN Wi-Fi*

Unlock the door to smarter heating and cooling, for total home comfort. View and control your air conditioner from anywhere in the world, set up schedules and get true two-way feedback.

*Requires Internet connection



Wi-Fi
CONTROL



Small Rooms

Unit Dimension: (w) 890 x (d) 233 x (h) 307 mm

MSZ-LN25VG-A1

Cooling Capacity: 2.5kW (min 1.0kW-max 3.5kW)

Cooling Efficiency - EER: 5.10/AEER:5.07

Heating Capacity: 3.2kW (min 0.8kW-max 5.4kW)

Heating Efficiency - COP: 5.42/ ACOP:5.39

MSZ-LN35VG-A1

Cooling Capacity: 3.5kW (min 0.8kW-max 4.0kW)

Cooling Efficiency - EER: 4.07/AEER:3.92

Heating Capacity: 4.0kW (min 1.0kW-max 6.3kW)

Heating Efficiency - COP: 4.88/ACOP:4.86

Medium Rooms

Unit Dimension: (w) 890 x (d) 233 x (h) 307 mm

MSZ-LN50VG-A1

Cooling Capacity: 5.0kW (min 1.0kW-max 6.0kW)

Cooling Efficiency - EER: 3.62/AEER:3.61

Heating Capacity: 6.0kW (min 1.0kW-max 8.2kW)

Heating Efficiency - COP: 4.05/ACOP 3.77

MSZ-LN60VG-A1

Cooling Capacity: 6.1kW (min 1.4kW-max 6.9kW)

Cooling Efficiency - EER: 3.53/AEER:3.52

Heating Capacity: 6.8kW (min1.8kW-max 9.8kW)

Heating Efficiency - COP: 3.78/ACOP:3.77

Features

- » Econo Cool
- » Auto/Double Vane
- » Colour Selection
- » Compact
- » DC Inverter
- » 24-Hour Timer
- » Operating Temperature Range
Cooling at -10°C ~ 46°C
Heating at -15°C ~ 24°C
- » 24-Hour Timer
- » Auto Restart
- » Built in Wi-Fi
- » Auto Change Over
- » Weekly Timer
- » Vertical & Horizontal Swing
- » Dual Split Vane Technology



A RANGE OF **COLOURS**
THAT WILL BRING YOUR
ENVIRONMENT TO LIFE



Ruby Red



Onyx Black



Pearl White



DUAL SPLIT VANE TECHNOLOGY

The unique dual split vane design allows airflow to be customised to suit different areas of the room, by independently directing air up, down left and right.

3D i-SEE SENSOR

Equipped with an infrared-ray sensor that measures the temperature at distant positions. While moving to the left and right, eight vertically arranged sensor elements analyse the room temperature.



PLASMA QUAD PLUS FILTER

An advanced, multi-stage filter system designed to effectively neutralise most contaminants such as allergens, viruses and bacteria ensuring the circulation of fresh, clean air back into the room.



DUAL BARRIER COATING

The Dual Barrier Coating reduces dust, bacteria and grease build up, making cleaning and maintenance much easier.

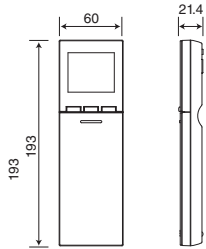
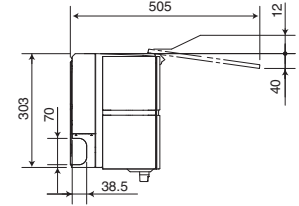
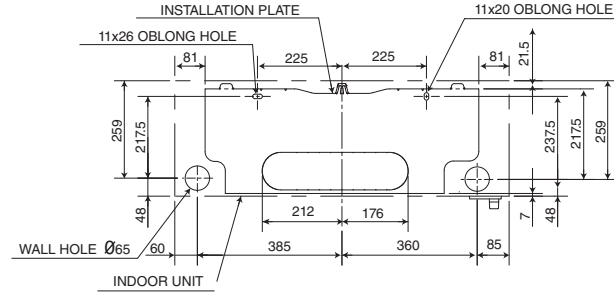
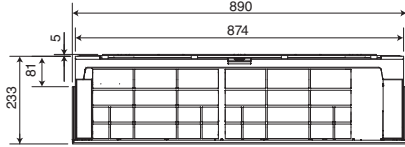
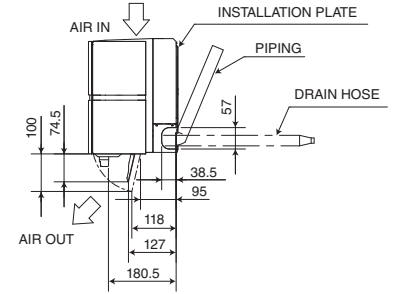
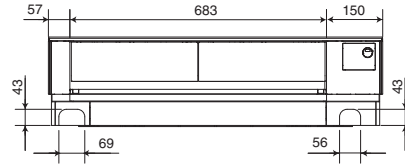
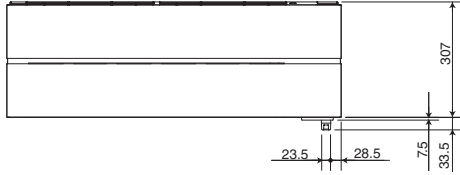


QUIET OPERATION

Noise affects comfort, so we constantly work to make our air conditioners as quiet as possible. With improvements to our outdoor unit fan blades combined with a unique grille design it's even quieter when in low noise mode.



DIMENSIONS



		MSZ-LN25/35/50VG/VGB/VGR	MSZ-LN60VG/VGB/VGR
PIPING	Insulation	ø35 O.D	ø37 O.D
	Liquid line	ø6.35 - 0.5m (flared connection ø6.35)	ø6.35 - 0.5m (flared connection ø6.35)
	Gas line	ø9.52 - 0.45m (flared connection ø9.52)	ø9.52 - 0.45m (flared connection ø12.7)
Drain hose		Insulation ø28 connected part ø16 O.D	Insulation ø28 connected part ø16 O.D

Specifications				MSZ-LN25VG-A1 MUZ-LN25/35VG	MSZ-LN35VG-A1 MUZ-LN25/35VG	MSZ-LN50VG-A1 MUZ-LN50VG	MSZ-LN60VG-A1 MUZ-LN60VG
Cooling	Capacity [Rated]		kW	2.5	3.5	5.0	6.1
	Capacity [Min-Max]		kW	1.0-3.5	0.8 -4.0	1.0 -6.0	1.4 - 6.9
	Total Input [Rated]		kW	0.490	0.860	1.380	1.730
	Total Input [Min-Max]		kW	0.180-0.900	0.160-1.180	0.190-2.330	0.270-2.730
	EER / AEER			5.10 / 5.07	4.07 / 4.05	3.62 / 3.61	3.53 / 3.52
	Star Rating			5.5	3.5	2.5	2.5
	Running Current [Rated]		A	2.5	4.1	6.3	7.8
	SPL	In [Quiet-Lo-Mid-Hi-SHi]	dB(A)	19 - 42	19 - 43	27 - 46	29 - 49
		OUT (PWL)	dB(A)	46 (60)	49 (61)	51 (64)	55 (65)
Air Volume (IN) [Quiet- SHi]		L/S	71-198	71-213	95-231	118-261	
Heating	Capacity [Rated]		kW	3.2	4.0	6.0	6.8
	Capacity [Min-Max]		kW	0.8 - 5.4	1.0 - 6.3	1.0 - 8.2	1.8 - 9.8
	Total Input [Rated]		kW	0.590	0.820	1.480	1.800
	Total Input [Min-Max]		kW	0.150 - 1.500	0.170 - 1.880	0.170 - 3.000	0.330 - 3.620
	COP / ACOP			5.42 / 5.39	4.88 / 4.86	4.05 / 4.04	3.78 / 3.77
	Star Rating			6.0	5.0	3.5	3.0
	Running Current [Rated]		A	3.0	4.0	6.8	7.9
	SPL	In [Quiet-SHi]	dB(A)	19 - 45	19 - 45	25 - 47	29 - 49
		OUT (PWL)	dB(A)	49 (61)	50 (62)	54 (66)	55 (69)
Air Volume (IN) [Quiet- SHi]		L/S	67-240	71-228	90-261	110-261	
Piping	Diameter (Gas/Liquid)		mm	9.52/6.35	9.52/6.35	9.52/6.35	12.7/6.35
	Max. Length/ Height		m	20/12	20/12	20/12	30/15
Indoor Unit	Input [Rated] (Cooling/ Heating)		W	20/29	24/29	29/34	40/40
	Dimensions (H x W x D)		mm	307 x 890 x 233	307 x 890 x 233	307 x 890 x 233	307 x 890 x 233
	Weight		kg	15.5	15.5	15.5	15.5
Outdoor Unit	Dimensions (H x W x D)		mm	550 x 800 x 285	550 x 800 x 285	714 x 800 x 285	880 x 840 x 330
	Weight		kg	35	35	40	55
	Breaker Size		A	10	10	16	16
Guaranteed Operating Range [Outdoor]		Cooling	°C	-10 ~ 46	-10 ~ 46	-10 ~ 46	-10 ~ 46
		Heating	°C	-15 ~ 24	-15 ~ 24	-15 ~ 24	-15 ~ 24



MitsubishiElectric.com.au

The specifications and information in this flyer are subject to change without notice. Colours depicted in this flyer may vary slightly. Images are for illustration purposes only.
Created November 2018